

4-80-001

TELEDYNE  
MINING PANTBOOK

## INDEX

4-80-001 - LEGRAND JOHNSON GRAVEL PIT

4-80-002 - TENTH WEST T.R. TIES

Property of \_\_\_\_\_

Address \_\_\_\_\_

Telephone \_\_\_\_\_

This Book is manufactured of a High Grade  
50% Rag Paper having a Water Resisting Surface,  
and is sewed with Nylon Waterproof Thread.

2670.08 89°39'

2582.05 89°39'

PT A - WEST L LOT 2      14.20      - 0 -      14.20

PT A - E. LINE LOT 2      1340.67 89°25'      1340.61

PT A - 6<sup>TH</sup> WEST      2674.70 89°27'      2674.58

FENCE TO 6<sup>TH</sup> WEST = 2674.58 - 14.20 = 2660.38      2640.00

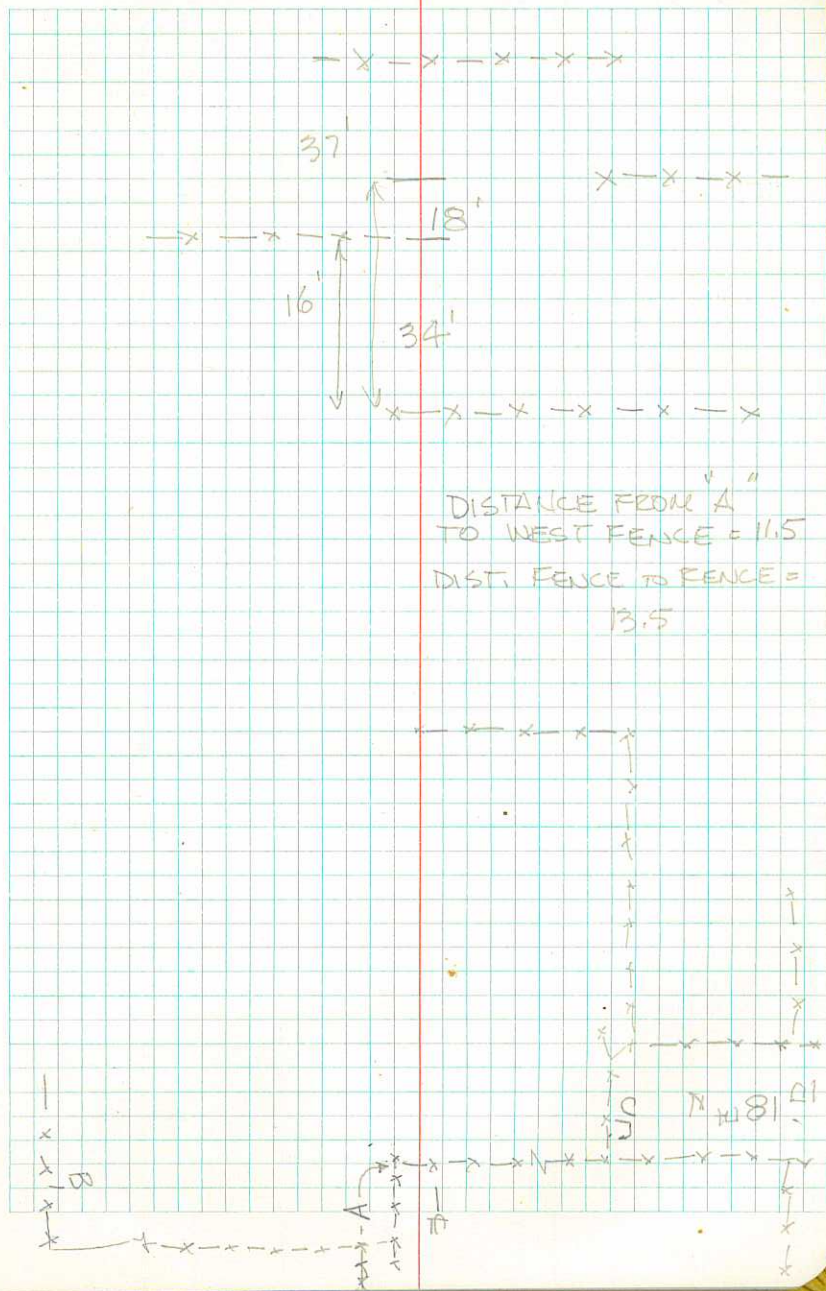
FENCE TO FENCE =      1326.47      1320.

13 MARCH 1978

LOCATION OF PROPERTY CORNERS  
ON 10<sup>TH</sup> WEST BETWEEN 18<sup>TH</sup> & 22<sup>ND</sup>

SET UP ON FENCE LINE AND MEASURED  
TO WEST AND EAST TO NEXT FENCE LINE

D		
	1332.48	89°23'
A		
C		
	680.71	89°17'
A		
B		
	1334.80	90°03'
SET UP ON		
A		



Nov. 24, 1980

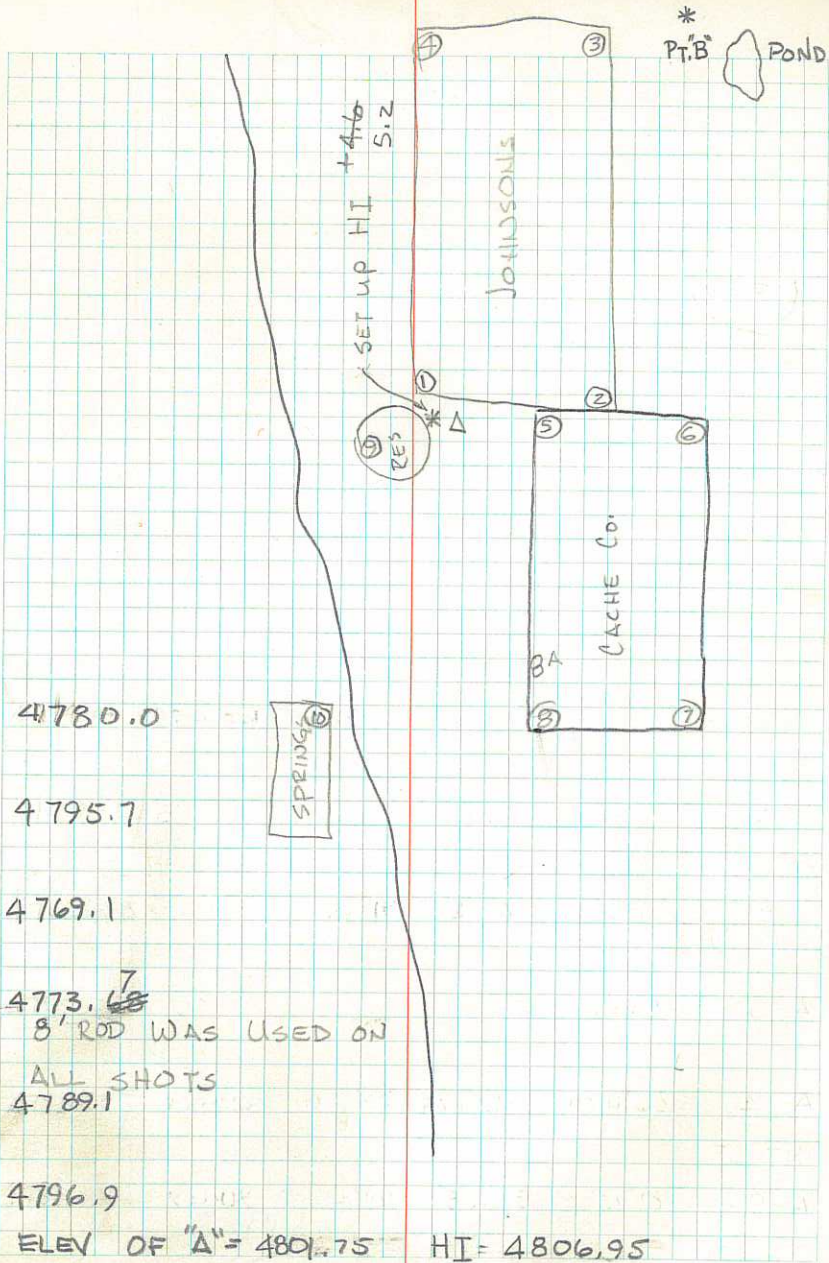
COLD, SNOWING

JOB # 4-80-001

ELEV FOR MIBLEY ~~GRA~~ WATER  
RES. TO CHECK ELEV DIFF OF  
RES., SPRING AND GRAVEL  
PITS,  
ELEV NEED TO BE ONLY TO THE  
NEAREST 1 FOOT.

P. WARD  
S. RUSSELL

STA-STA	HORZ $\angle$	SLP. DIST	VERT $\angle$	HORZ DIST	ELEV.
A-BA	105°44'15"	1589.19	90°41'	1589.08	-18.95
A-5	53°29'	1237.70	90°09'00"	1237.70	-3.24
INT RT					
A-8	108°14'	1627.28	91°03'00"	1627.01	-29.82
INT RT					
A-7	99°24'45"	2227.62	90°39'00"	2227.48	-25.27
INT RT					
A-6	63°49'00"	2114.03	90°16'00"	2114.01	-9.84
INT RT					
A-1	0°00'	518.30	90°13'45"	518.30	-2.07



STA-STA	HORZ $\chi$	SLP. DIST	VERT $\chi$	HORZ. DIST	ELEV.
---------	-------------	-----------	-------------	------------	-------

B-POND		139.86	99°43'00"	137.85	-23.61
--------	--	--------	-----------	--------	--------

B-6		2493.41	89°57'00"	2493.41	+2.18
-----	--	---------	-----------	---------	-------

ELEV 6 = 4789.1

SAVAGE WATER EL. INST. HI 5.2

PT 6 - VERT  $\chi$  = 89°57'00" SLP DIST = 2493.41

WATER SURFACE VERT  $\chi$  = 99°43' SLP DIST = 139.86

A-3 CAN'T SEE

A-4	26°41'00"	3225.24	89°41'00"	3225.19	+17.83
-----	-----------	---------	-----------	---------	--------

INT LT

A-9	182°25'30"	92.65	101°48'00"	90.69	-18.95
-----	------------	-------	------------	-------	--------

INT RT

4780.0

PT "B" EL. = 4789.02

PT "B" INST HI = +5.9'

\* HI = 4794.92

4763.31

4789.1



4816.8

4780.0

\* PT 6

TENTH WEST

1-8-81

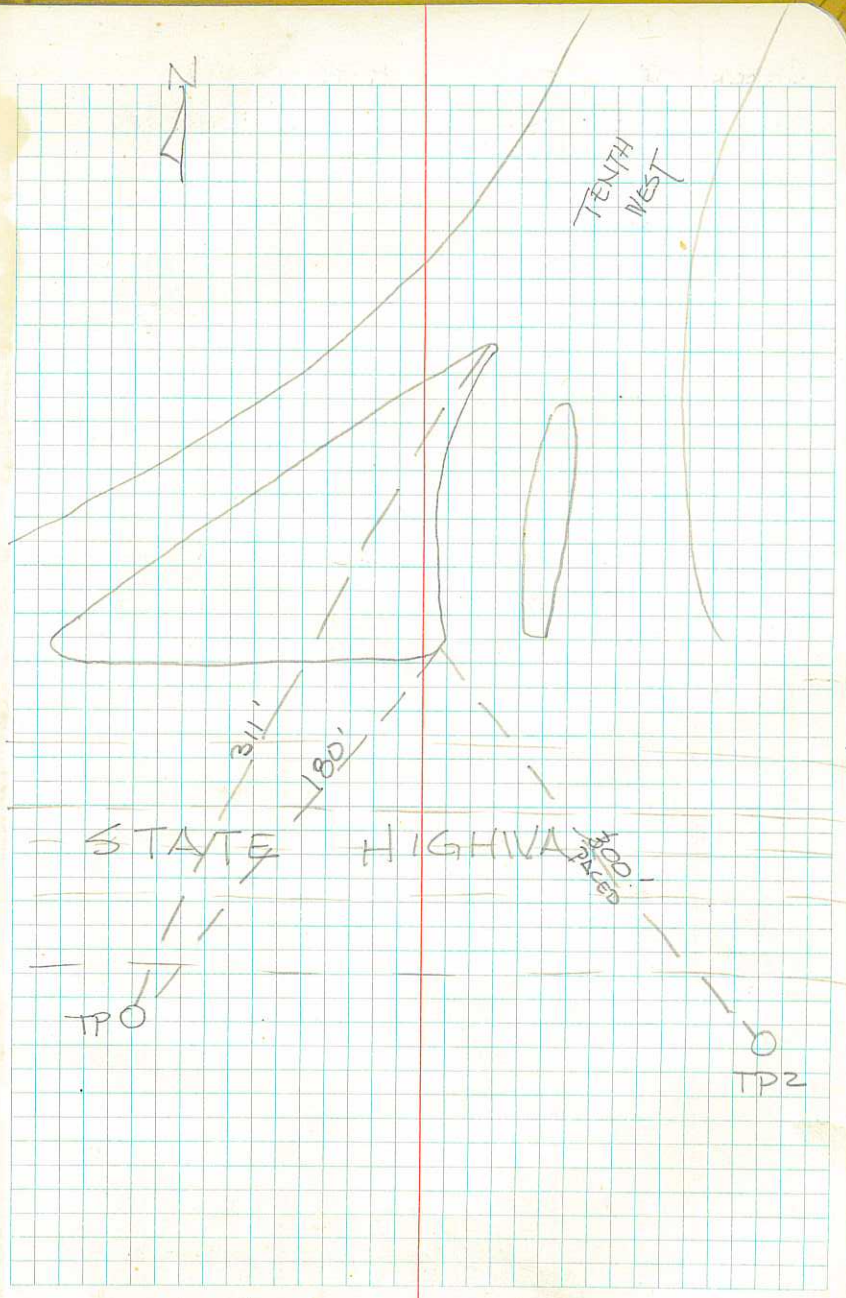
S. RUSSELL, P. VARD

4-80-002

T.P. - No. CURB 311 FT.

T.P. - SE CURB 180 FT

TP 2 - SE CURB 300 FT



TE  
S. CHECK & OF COLLECTOR ROAD  
IN FRONT OF DARRELL KUNZLER'S  
HOUSE.

T.P. - 2-23-81 JOB 4-80-0003

FAIR WARM 40° SUNNY

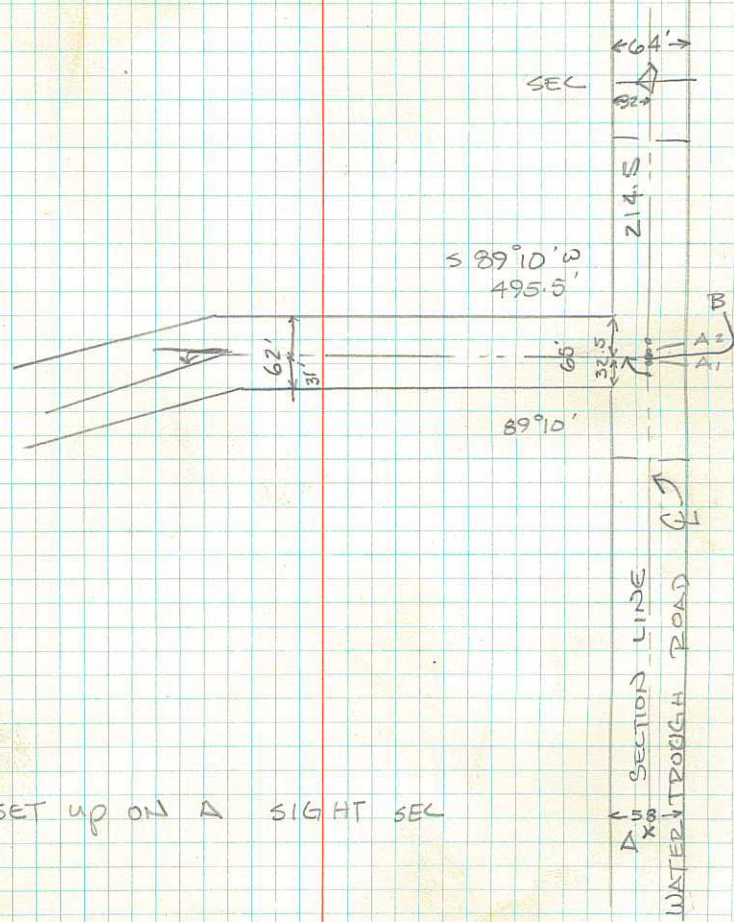
T.P. -

TP 2

A<sub>2</sub>-B 1.56'

A-A<sup>2</sup> 448.75 90°16' 448.75'

A-SEC 659.23 90°10' 659.23



SET up ON A SIGHT SEC



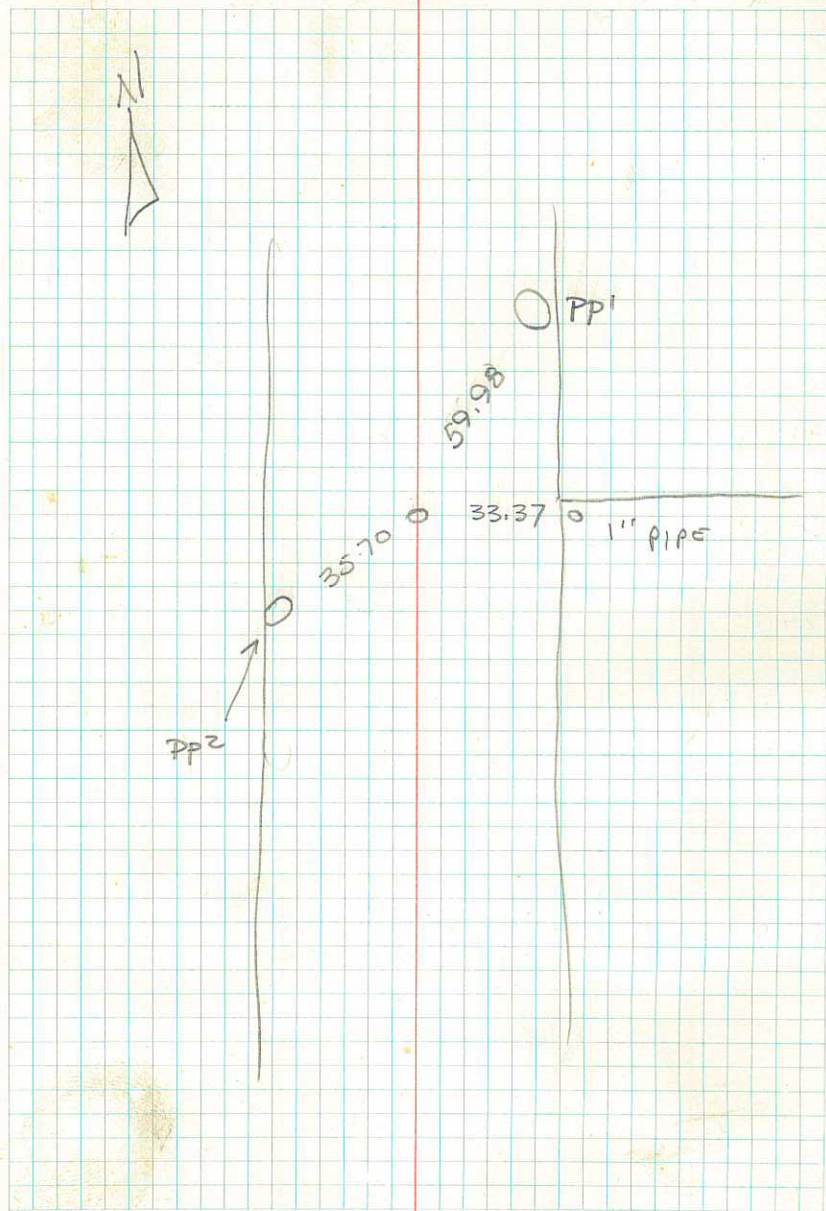
MON OF SEC  $\frac{11}{12}$  T/ZN 1A/1  
 $\frac{14}{13}$

Cor- 1" pipe 33.37'

Cse- PPI 35.70

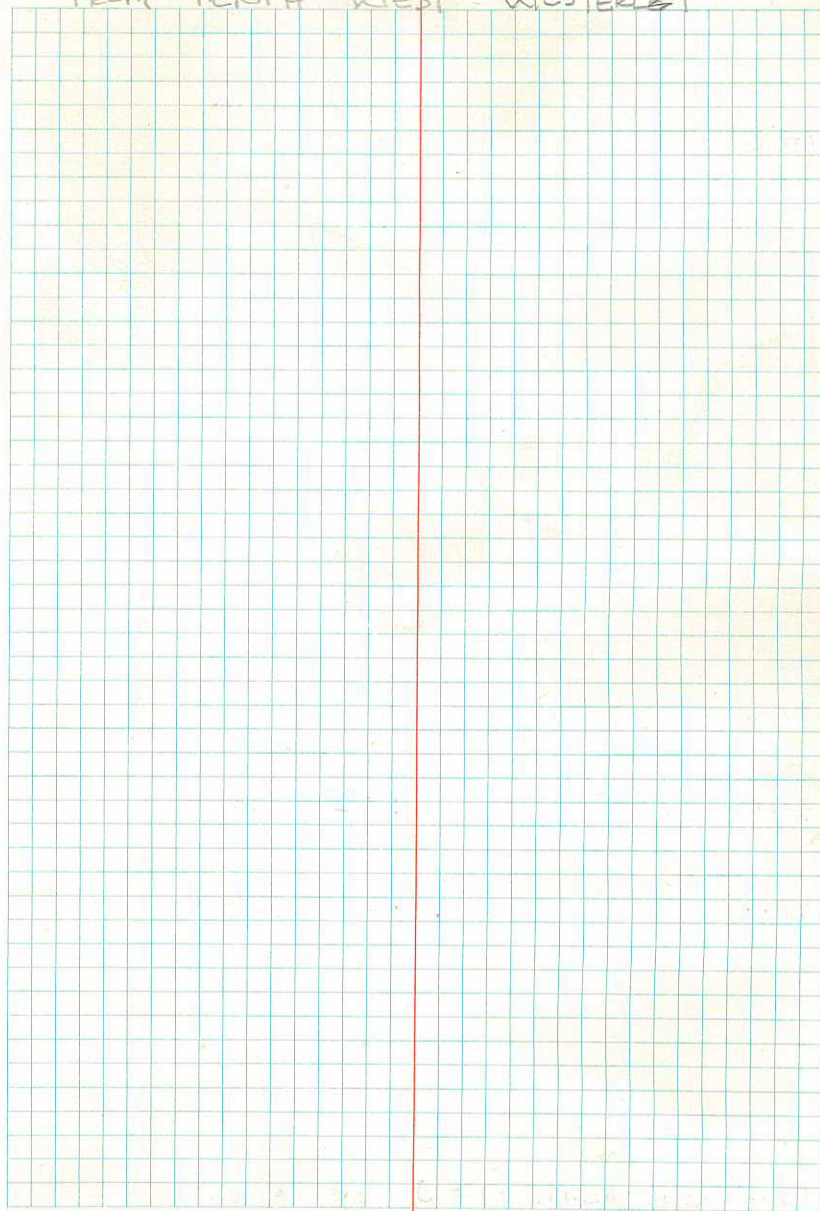
Cor- PPZ 59.98

SET SPIKE & FLASHER

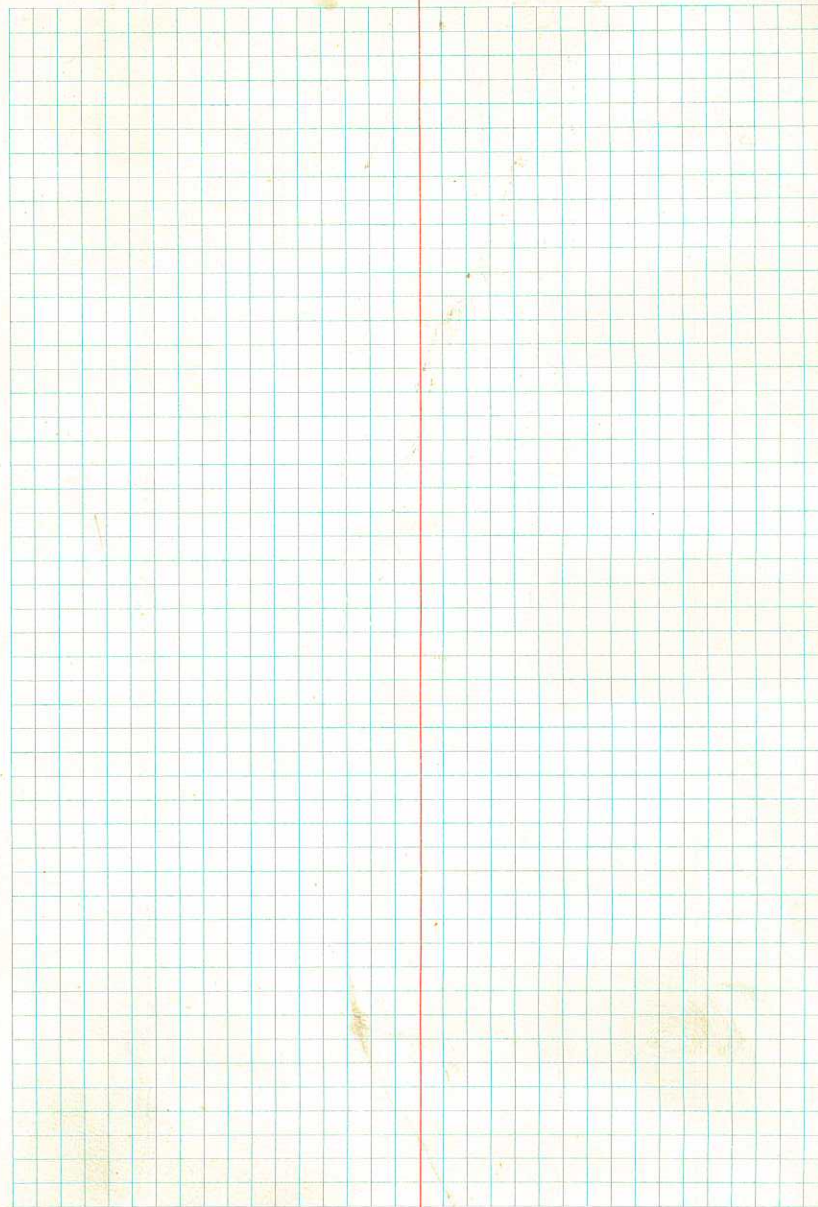


STA	+	HI	-	4-80-004 SEE 4-81-001
	6 <sup>66</sup>	61 <sup>43</sup>		
TP 2			3 <sup>25</sup>	54 <sup>83</sup>
6+00			10 <sup>3</sup>	47 <sup>8</sup>
5+00			9 <sup>2</sup>	48 <sup>3</sup>
4+00			9 <sup>4</sup>	48 <sup>7</sup>
3+00			9 <sup>3</sup>	48 <sup>8</sup>
2+00			9 <sup>5</sup>	48 <sup>6</sup>
1+00			8 <sup>2</sup>	49 <sup>3</sup>
0+40 PIPE OUTLET			9 <sup>03</sup>	49.1
0+00 PIPE INLET #			9 <sup>3</sup>	48 <sup>2</sup>
TP 1	4 <sup>58</sup>	4458 <sup>08</sup>		
BM TOP OF CANAL CLEAN-OUT AT 2 <sup>ND</sup> & 10 <sup>TH</sup> INTERSECTION (SW COR. OF CONCRETE ASSUMED 4453 <sup>3</sup> (CR 343(3)))				

LEVEL ALONG 2ND NORTH  
FROM TENTH WEST - WESTERLEY



STA	+	HI	-	
7+00			13.4	48.0
6+65	DRAIN	FROM EAST	12" cnp	
6+50			12.0	49.4
6+00	DIV. DAM	HEAD GATE		
6+00			13.0	48.4
5+00			12.4	49.0
4+00			12.34	49.1234
3+80-410	VALLEY METAL DRIVEWAY			
3+60	18" cnp FROM EAST			
3+50	3" DRAIN PIPE FROM WEST			
3+25	3" DRAIN PIPE FROM WEST			
3+00			12.8	48.6
2+00			13.3	48.1
1+00			13.3	48.1
0+00			13.8	47.6
PIPE INLET				
2ND NORTH ALONG 10 <sup>th</sup> W IN CANAL				



3-6-81 LEGRAND JOHNSON HYRUM P 11. 4-80-001

LEVELS (SET up on A.)

WARD, RUSSELL COOL 35°

STA	HORIZ $\angle$	SLP DIST	VERT $\angle$	HORIZ. DIST	VERT ELEV
A-1	0°00	771.21	90°13"		
A-2	21°33'50" RT	691.77	90°13"		
A-3	45°17'00" RT	725.64	90°03'		
A-4	54°21'25" RT	776.41	89°56'		
A-5	81°52'20" RT	414.80	89°31'		
A-6	37°26' RT	235.92	89°31'		
A-7	28°42'10" LT	410.18	90°09'		
A-8	59°45'50" LT	343.86	90°09'		
A-9	143°25' LT	116.11	89°17'		
A-10	222°51'10" LT	364.17	89°17'		
A-11	179°52'00" LT	743.25	89°25'		
A-12	155°07'20" LT	664.80	89°33'		

SEE PG

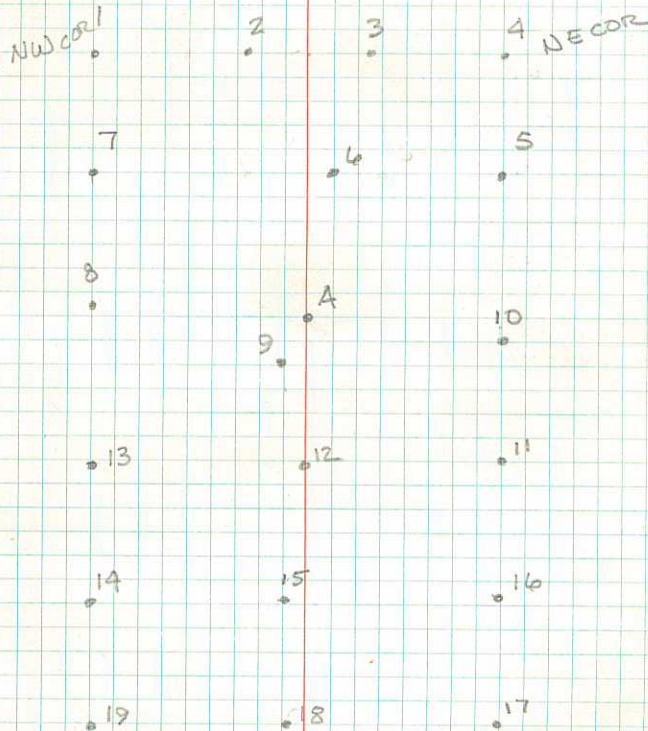
HI = 5.13'

ROD = 8.00'

INT BL = 4800.21

TGT HI = 8.00

DM HI = 5.63

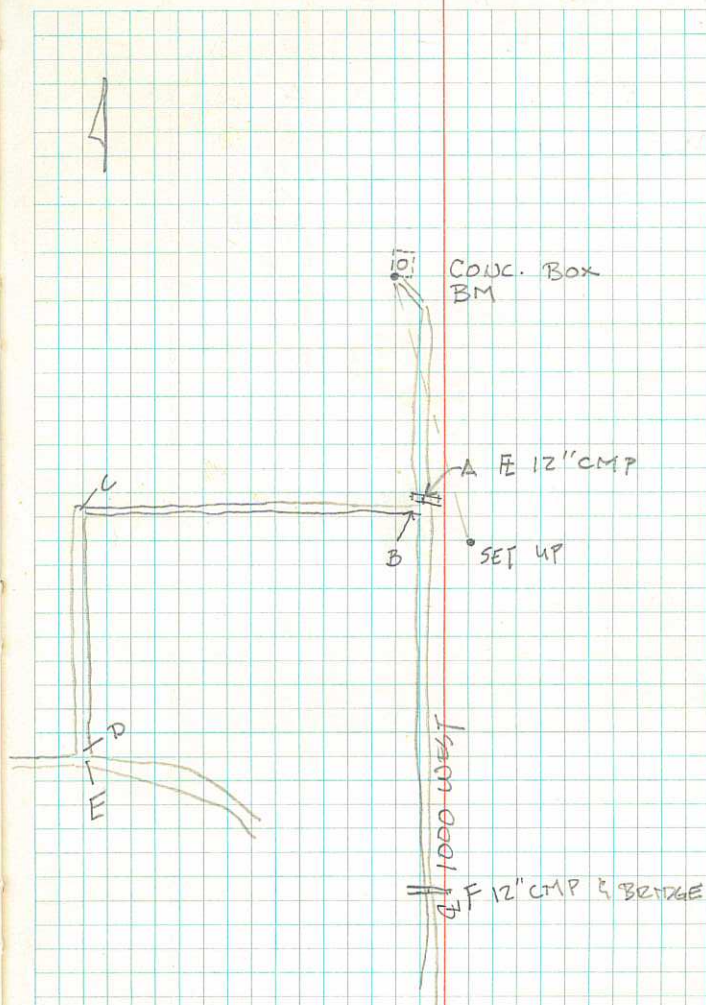


A-13	125°01'20" LT	761.96	89°43'
A-14	136°27'40" LT	1262.80	89°50'
A-15	151°27'40" LT	1209.92	89°42"
A-16	168°23'30" LT	1260.00	89°33'
A-17	162°48'00" LT	1962.70	89°42'
A-18	152°08'50" LT	1935.74	89°46'
A-19	142°33'50" LT	1970.95	89°49'
A-2/w	144°01'15"	1962.85	89°46'

EL: 4805.41 20+00 H'WAY 2/w

CHECK ELEV. 10<sup>th</sup> WEST 2<sup>ND</sup> No.  
 WARD, RUSSELL 3-9-81 480-004  
 INST. HI 51<sup>E</sup> SEE 1-81-001  
 ROD - 800

STA	HORIZ. $\angle$	VERT. $\angle$	SLP. DIST.	HORIZ. DIST.	ELEV.
F	174°11'	89°54'	679.96	679.96	452.10
E	LT				4436.5 <del>11'</del>
D	110°37' LT	90°18'	1510.50	1510.48	4443.5
C	85°00'30" LT	90°20'	1394.86	1394.84	4443.3 <del>11'</del>
B	48°20' LT	91°34'	71.45	71.42	4448.95
A	44°39' LT	92°02'	45.23	45.20	4449.3
B.M.	0°00"	89°49'	808.83	808.83	4453.5
BACKSIGHT SW COR CONC ELEV					
SETUP POINT ELEV.					4453.25



8-14-81 EAST WEST Pkwy

SCOTT T WATSON

Ross #

ALMA WATSON

PARCEL 04-078-0010  
0009

